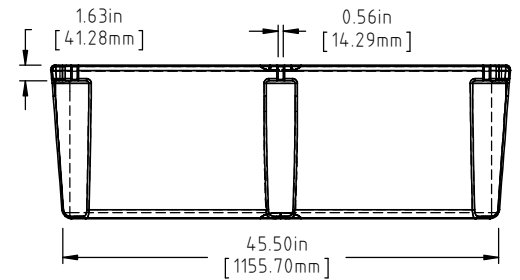


CORNER DETAIL
 DETAIL A
 SCALE 1:3



Ⓐ Ⓒ

NOTE: BUOYANCY IS 1823 LBS.(826.90 KG)

C	98 LBS WAS 95 LBS, 1823 LBS WAS 1769 LBS	ADH 6/25/12	2420		
B	METRIC DIMENSIONS ADDED	ADH 6/18/08	1685	DRAWN / DATE	MATERIAL
A	ADD BUOYANCY NOTE	GWC 1/10/07		DEAN 11/18/94	POLYETHYLENE
A	CHANGE WEIGHTS FF WAS 97	GWC 1/10/07		APPRD. / DATE	
REV	DESCRIPTION	BY / DATE	CCN	ADH 11/6/07	
ALL DIMENSIONS ARE IN DECIMAL INCHES TOLERANCES UNLESS OTHERWISE SPECIFIED		THIRD ANGLE PROJECTION ANSI 14.5M		SHOT WEIGHT: 65 LBS. (29.48 KG.)	NOTES: Ⓐ Ⓒ
POLYETHYLENE		METAL DECIMAL $\pm .125"$ FRACTION $\pm 1/4"$ ANGLE $\pm 1^\circ$		SHIPPING WEIGHT: SEE NOTES	1.) AF 65 LBS. (29.48 KG.)
$\pm 1\%$ @ 68°F				FINISH:	2.) FF 98 LBS. (44.45 KG.)
					3.) 0.150 IN (3.81 mm) NOM. WALL



Den Hartog
 INDUSTRIES, INC.

Acu Roto-Mold Injection Molding Blow Molding Sowjoy

4010 HOSPERS DRIVE S. BOX 425, HOSPERS, IOWA 51238-0425

DESCRIPTION		48 X 72 X 16 FLOAT
SCALE	N.S.	PART NO. 4872-16