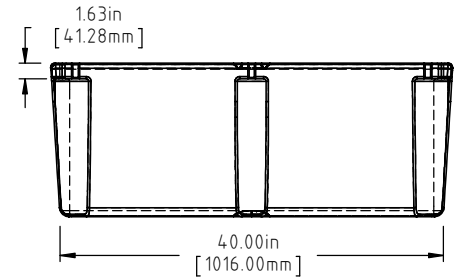
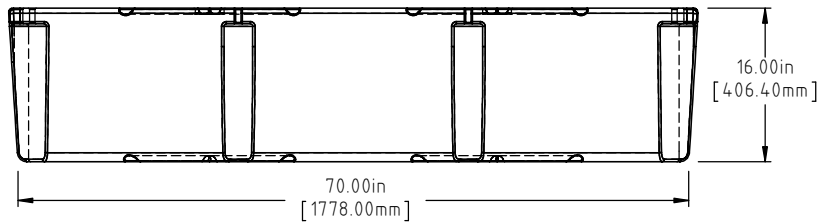


CORNER DETAIL

DETAIL A
SCALE 1:3



Ⓐ Ⓒ

NOTE: BUOYANCY IS 1555 LBS.(705.34 KG)

C	86 LBS WAS 81 LBS, 1555 LBS WAS 1536 LBS	ADH 6/25/12	2420		
B	METRIC DIMENSIONS ADDED	ADH 6/18/08	1685	DRAWN / DATE REH 9/9/98	MATERIAL POLYETHYLENE
A	ADD BUOYANCY NOTE	GWC 1/10/07		APPRD. / DATE ADH 11/5/07	
A	CHANGE WEIGHTS FF WAS 87	GWC 1/10/07			
REV	DESCRIPTION	BY / DATE	CCN		
ALL DIMENSIONS ARE IN DECIMAL INCHES TOLERANCES UNLESS OTHERWISE SPECIFIED		THIRD ANGLE PROJECTION ANSI 14.5M		SHOT WEIGHT: 55 LBS. (24.95 KG.)	NOTES: Ⓐ Ⓒ 1.) AF 55 LBS. (24.95 KG.) 2.) FF 86 LBS. (39.01 KG.) 3.) 0.150 IN (3.81 mm) NOM. WALL
POLYETHYLENE		METAL DECIMAL ± .125" FRACTION ± 1/4" ANGLE ± 1°		SHIPPING WEIGHT: SEE NOTES	
±1% @ 68°F		[Symbol]		FINISH:	



Den Hartog
INDUSTRIES, INC.

Acra Roto-Mold Injection Molding Blow Molding Sowjoy

4010 HOSPERS DRIVE S. BOX 425, HOSPERS, IOWA 51238-0425

DESCRIPTION 42 X 72 X 16 FLOAT	
SCALE N.S.	PART NO. 4272-16