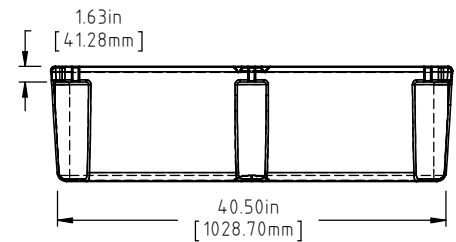
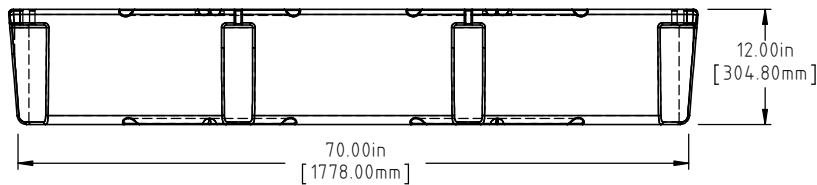


CORNER DETAIL

DETAIL A
SCALE 1:3



Ⓐ Ⓒ

NOTE: BUOYANCY IS 1166 LBS.(528.89 KG)

C	80 LBS WAS 70 LBS, 1166 LBS WAS 1159 LBS	ADH 6/25/12	2420		
B	METRIC DIMENSIONS ADDED	ADH 6/18/08	1685	DRAWN / DATE	MATERIAL
A	ADD BUOYANCY NOTE	GWC 1/10/07		REH 10/15/02	POLYETHYLENE
A	CHANGE WEIGHTS FF WAS 72	GWC 1/10/07		APPRD. / DATE	
REV	DESCRIPTION	BY / DATE	CCN	ADH 11/5/07	
ALL DIMENSIONS ARE IN DECIMAL INCHES TOLERANCES UNLESS OTHERWISE SPECIFIED		THIRD ANGLE PROJECTION ANSI 14.5M		SHOT WEIGHT: 50 LBS. (22.68 KG.)	NOTES: Ⓐ Ⓒ 1.) AF 50 LBS. (22.68 KG.) 2.) FF 80 LBS. (36.29 KG.) 3.) 0.130 IN (3.30 mm) NOM. WALL
POLYETHYLENE		METAL DECIMAL ± .125" FRACTION ± 1/4" ANGLE ± 1°		SHIPPING WEIGHT: SEE NOTES	
±1% @ 68°F				FINISH:	



Den Hartog
INDUSTRIES, INC.

Acra Roto-Mold Injection Molding Blow Molding Sowjoy

4010 HOSPERS DRIVE S. BOX 425, HOSPERS, IOWA 51238-0425

DESCRIPTION		42 X 72 X 12 FLOAT	
SCALE	N.S.	PART NO.	4272-12