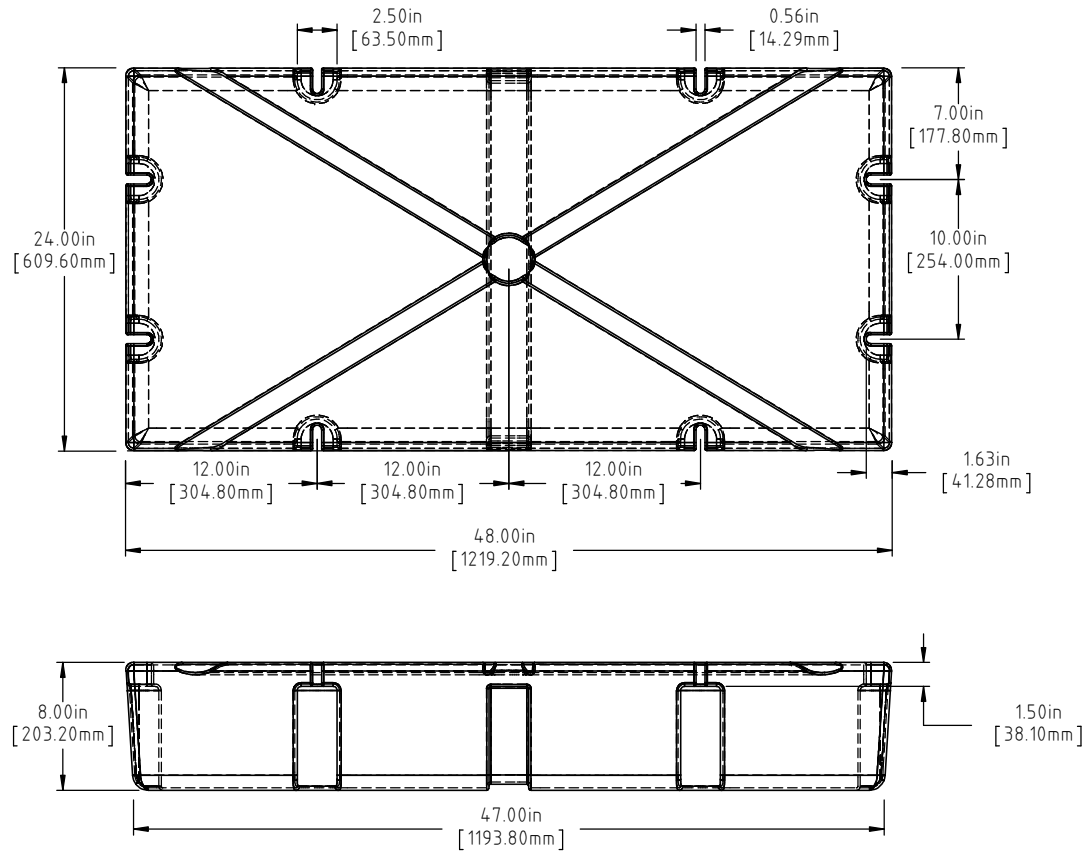


Copyright. All information furnished within this document, electronic file or design correspondence is the property of Den Hartog industries, Inc. and shall not be used, disclosed to others or copied without the expressed written consent of Den Hartog Industries, Inc.



(A)(C)  
NOTE: BUOYANCY IS 288 LBS.(130.63 KG)

|  |  |  |      |                                    |  |
|--|--|--|------|------------------------------------|--|
| C  | 27 LBS WAS 26 LBS, 288 LBS WAS 285 LBS | ADH 6/20/12                                      | 2420 |                                    |  |
| B  | METRIC DIMENSIONS ADDED                | ADH 6/12/08                                      | 1685 | DRAWN / DATE                       | MATERIAL   |
| A  | ADD BUOYANCY                           | GWC 1/3/07                                       |      | REH 12/24/98                       | POLYETHYLENE   |
| A  | CHANGE WEIGHTS, AF WAS 20              | GWC 1/3/07                                       |      | APPRD. / DATE                      |  |
| REV  | DESCRIPTION                            | BY / DATE  | CCN  | ADH 11/5/07                        |  |
| ALL DIMENSIONS ARE IN DECIMAL INCHES TOLERANCES UNLESS OTHERWISE SPECIFIED |  | THIRD ANGLE PROJECTION ANSI 14.5M                |      | SHOT WEIGHT: 21.00 LBS. (9.53 KG.) | NOTES: (A)(C)<br>1.) AF 21.00 LBS. (9.53 KG.)<br>2.) FF 27.00 LBS. (12.25 KG.)<br>3.) 0.150 IN (3.81 mm) NOM. WALL |
| POLYETHYLENE   |  | METAL DECIMAL ± .125" FRACTION ± 1/4" ANGLE ± 1° |      | SHIPPING WEIGHT: SEE NOTES         |  |
| ±1% @ 68°F   |  |  |      | FINISH:                            |  |



**Den Hartog**  
INDUSTRIES, INC.

Acro Roto-Mold Injection Molding Blow Molding Sowjoy

4010 HOSPERS DRIVE S. BOX 425, HOSPERS, IOWA 51238-0425

|             |                    |                  |
|-------------|--------------------|------------------|
| DESCRIPTION | 24 X 48 X 08 FLOAT |                  |
| SCALE       | N.S.               | PART NO. 2448-08 |