

D	34 LBS WAS 33 LBS, 360 LBS WAS 343 LBS	ADH 6/15/12	2420
C	METRIC DIMENSIONS ADDED	ADH 6/11/08	1685
B	CHANGE WEIGHTS	GWC 11-29-06	
A	ADD BUOYANCY	GWC 11-29-06	
REV	DESCRIPTION	BY / DATE	CCN

DRAWN / DATE	MATERIAL
DHJ 2-3-97	POLYETHYLENE
APPRD. / DATE	
ADH 11/5/07	

ⓓ ⓑ ⓐ NOTE: BUOYANCY 360 LBS.(163.29 KG.)

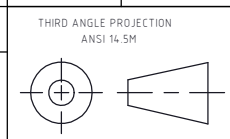


Den Hartog
INDUSTRIES, INC.

Acro Roto-Mold Injection Molding Blow Molding Sowjoy

4010 HOSPERS DRIVE S. BOX 425, HOSPERS, IOWA 51238-0425

ALL DIMENSIONS ARE IN DECIMAL INCHES
TOLERANCES UNLESS OTHERWISE SPECIFIED
POLYETHYLENE
±1% @ 68°F



SHOT WEIGHT:
27 LBS.(12.25 KG.)
SHIPPING WEIGHT:
SEE NOTES
FINISH:

NOTES: ⓑ ⓓ
1.) AF 27 LBS.(12.25 KG.)
2.) FF 34 LBS.(15.42 KG.)
3.) 0.150in (3.81mm) NOM. WALL

DESCRIPTION	20 X 72 X 08 FLOAT	
SCALE	N.S.	PART NO. 2072-08